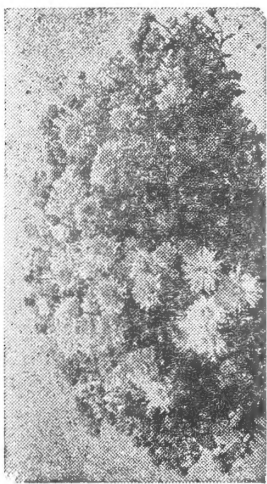


62

Ra



AN INVITATION TO CHRYSANTHEMUM ENTHUSIASTS: You are invited to visit our colorful Hardy Chrysanthemum Display this fall. The best display will be seen the last of September on through October 15th or until a hard freeze. Choose from 200 varieties the ones you desire and we will book your order for shipment in Spring of 1958. Some Field Grown clumps available in many of the varieties. **WE ARE LOCATED** on the East edge of Greencastle on the Indianapolis Road, or new State Road 240.

1957 FALL SUPPLEMENT
TERRACE VIEW GARDENS
GRAFTON LONGDEN, JR.
GREENCASTLE, INDIANA
 Return Postage Guaranteed

LIBRARY
RECORDED
 ★ OCT 7 1957 ★
 U. S. Department of Agriculture

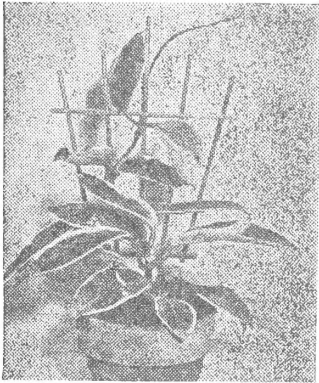
Sec. 34.66, P. L. & R.
U. S. POSTAGE
PAID
 Permit No. 59
 Greencastle, Indiana

LIBRARY, U. S. DEPT. OF AGRICULTURE
WASHINGTON 25, D. C.
f54

TERRACE VIEW GARDENS, Greencastle, Indiana

This supplements our Spring Catalog. House Plants on Pages 12, 13, 14 and 15 of our Spring Catalog are available now too. All prices remain the same except Hoyas which are relisted here. Coleus on page 9 are also available in the Fall. Gloxinia Bulbs are available only in the early Spring. Orders for perennials will be booked for Spring Shipment only. If you have mislaid your Spring Catalog, write to us for another.

HOYA (Wax Plant)



*H-5 HOYA AUSTRALIS—Large thick waxy egg shaped light green leaves; waxy white flowers.

\$1.00 each

*H-4 HOYA BELLA—Small waxy dark green leaves; non climbing dwarf habit of growth. Excellent for growing in hanging baskets. Waxy white flowers borne while plants are very young. Free blooming.

\$1.00 each

*H-3 HOYA CARNOSA — Thick waxy deep green ovate leaves with lovely waxy pinkish-white flowers.

75c each

H-2 HOYA CARNOSA EXOTICA—Golden cream leaf edged in green; very slow grower. Lovely.

75c each

*H-1 HOYA CARNOSA VARIEGATA — Ovate waxy green leaves edged with cream and an occasional tinge of pink; pinkish-white flowers; slow blooming. Illustrated.

75c each

H-6 HOYA KEYSI — Roundish velvety gray-green waxy leaves; free flowering with off-white flowers.

\$1.00 each

H-7 HOYA SILVER LEAF (Unidentified Specie) — Long thick waxy oval green leaves splashed with silver; very beautiful ciliate maroon flowers. Rare.

\$3.00 each

SP-4 SPECIAL HOYA OFFER—One Each of the Four Starred Kinds for \$3.00

SP-7 SPECIAL HOYA OFFER—One Each of all Seven Kinds Listed for \$7.50

IVIES

(See Page 12 of Catalog)

IV-35 GLACIER ERECTA IVY—Upright growing with triangular leaves which are light green in center with irregular white edges. A very beautiful variegated Ivy.

50c each

IV-21 PIXIE IVY—A fine miniature self branching green Ivy. Each leaf has five pointed deeply notched lobes.

45c each

PEPEROMIA

“The Coming Houseplant”

(See Page 13 in Catalog)

Peperomias thrive in dark locations with little moisture required. They come in a wide range of types and foliage and you will want many in your home.

P-17 PEPEROMIA “WEBER’S BASKET”—New! Beautiful small bushy free branching green plants which are delightful planted in small containers.

50c each

P-8 PEPEROMIA “BRAZILIAN QUEEN”—New! An outstanding self branching and vining Peperomia with shiny light green leaves; most with red dots on reverse side. Our introduction. Illustrated.

40c each



SP-8 SPECIAL PEPEROMIA OFFER — Collection of all kinds listed in Spring Catalog plus 2 new ones in Supplement and 2 SURPRISE Choice ones (Our Selection). All 10 for \$4.50.

HP-2 ALUMINUM PLANT (Pilea Cadierei)—An upright growing native of Indo China with vivid green oblong crinkly foliage. The sunken veins are overlaid with shining silver blotches.

60c each

HR-1 RUELLIA MACRANTHA—A rarely seen low creeper from Brazil. Leaves are satiny green with silver veins. Beautiful rosy-purple flowers.

75c each

AFRICAN VIOLETS

(See Page 15 in Catalog)

WHITE MADONNA—Finest, truly pure white, double flowers with dark green girl foliage. \$2.00 each.

PINK HOLIDAY—Double rose pink; distinctive color. \$2.00 each.



SA-2 SAXIFRAGA SARMENTOSA VARIEGATA — Also called Magic Carpet. A beautiful variegated form of the Strawberry Begonia (see page 13). Leaves are green with white band and pink edge. Young leaves have pink overcast. Beautiful variegated foliage plant when given good culture and best grown in a rather warm location. **\$1.25 each.**

Bittersweet Berries

New crop available late September. Beautiful berries which are fine for Fall and Winter decoration. Large bunches. **75c each.**

TULIPS



RED EMPEROR
(Botanical Specie) —
Dazzling scarlet with
black and yellow throat.
Extra large flowers on
15-inch stems in early
April. **15c each; 6 for
70c; 12 for \$1.30.**

WHITE EMPEROR (Concerto)—New addition to the Emperor series of Tulips. Same large size but in white. **30c each; 6 for \$1.50.**

YELLOW EMPEROR (Gold Beater)—New! Yellow of same large size and beauty. **30c each; 6 for \$1.50.**

PINK EMPEROR (Mitella) — New! Beautiful pink with white edge in the Emperor series; same large size. **30c each; 6 for \$1.50.**

KAUFMANNIANA (The Waterlily Tulip) — Cream tinged carmine. Height 6 inches. Early bloming. **20c each; 12 for \$2.00.**

Lily Flowering Tulips

MARIETTE—Pink.

WHITE TRIUMPHATOR—White.

GOLDEN DUCHESS—Yellow.

15c each; 6 for 70c; 12 for \$1.30

Regular Darwin and Cottage Tulips

Red, White, Blue, Yellow, Pink, Orange, Bronze and Variegated; also Mixed.

Sold separate colors or mixed—Not less than six of a kind.

6 for 55c; 12 for \$1.00; 50 for \$3.75; 100 for \$7.00

CROCUS

Yellow, White, Blue, Striped, Mixed.

6 for 40c; 12 for 75c

Parrot Tulips

BLACK PARROT—Satin purplish black.

DISCOVERY—Lovely pink parrot.

GADELAN—Blue and purple blend.

ORANGE PARROT—Rich orange burnished bronze.

PARROT WONDER—Largest. Bright carmine red.

SUNSHINE—Clear golden yellow.

TEXAS GOLD—Deep yellow edged vivid red.

15c each; 6 for 70c; 12 for \$1.30

NARCISSUS (Daffodils)

HOLLANDS GLORIE—Double yellow trumpet.

MRS. R. O. BACKHOUSE—White with pink trumpet.

PRES. LEBRUN—White with yellow trumpet.

SCARLET LEADER—White with bright red cup.

UNSURPASSABLE—Deep yellow giant; early. Trumpet.

15c each; 12 for \$1.50

MOUNT HOOD—Best pure white trumpet.

20c each; 12 for \$1.80

MUSCARI (Grape Hyacinths)

M. ARMENIACUM—Dainty delicate spires of small bright blue bell-like flowers.

M. ALBUM—White bell-like flowers.

M. PLUMOSUM (Feather Hyacinth)—Spires of violet blue flowers of feathery plume appearance. Bloom in May.

6 for 40c; 12 for 75c

SNOWDROPS

GALANTHUS NIVALIS — Small white blossoms suspended from delicate stems remind one of a series of bells that were cracked by frosty winter winds.

6 for 40c; 12 for 75c

MINIMUM ORDER REQUIRED IS \$2.50